



GAT MONTHLY MEMBERSHIP PROGRESS REPORT

Results as of: 2/28/2023

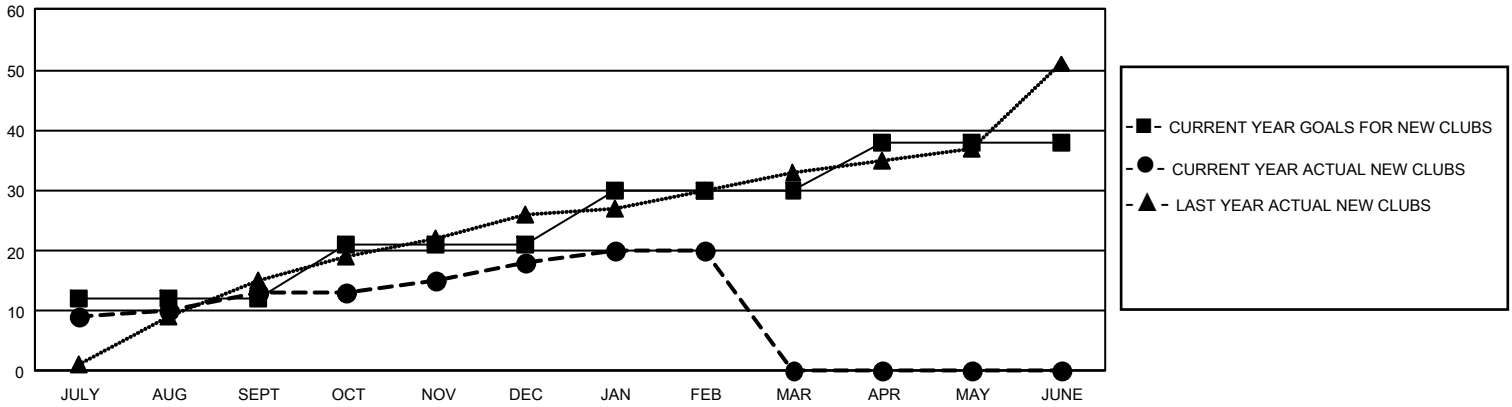
GMT Constitutional Area 8, Group B

REPORT DOES NOT INCLUDE CLUBS IN UNDISTRICTED AREAS.

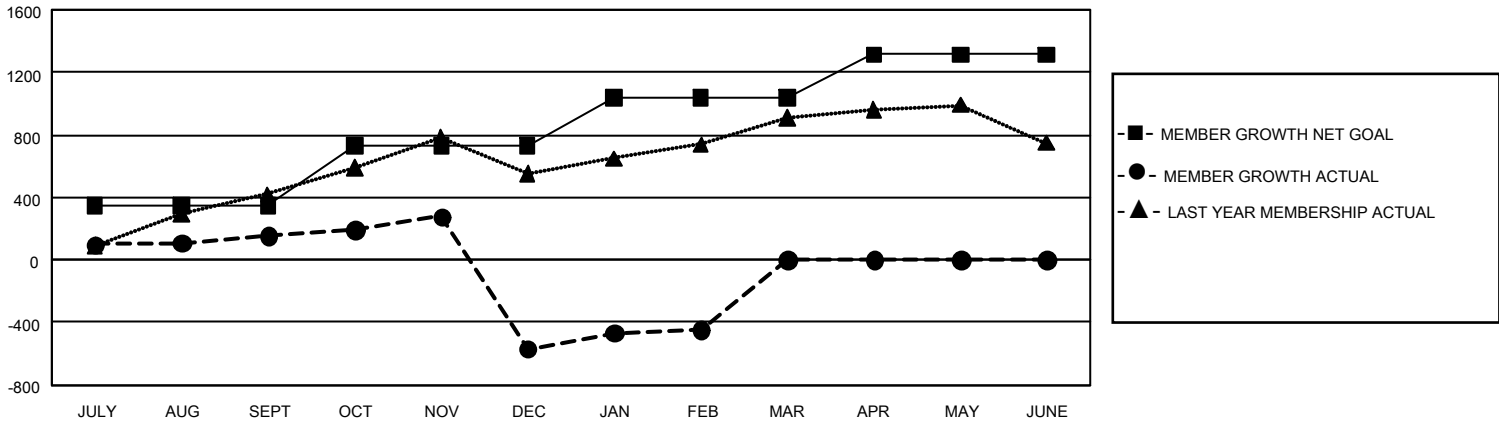
Clubs			
RESULTS FOR 2022-2023			
QUARTER	NEW CLUB GOAL	NEW CLUBS	DROPPED CLUBS
JULY/AUG/SEPT	36	13	8
OCT/NOV/DEC	27	5	30
JAN/FEB/MAR	27	2	3
APR/MAY/JUNE	24	0	0

Members			
RESULTS FOR 2022-2023			
QUARTER	MEMBER GROWTH NET GOAL	MEMBER GROWTH ACTUAL	DROPPED MEMBERS ACTUAL (including transfers)
JULY/AUG/SEPT	350	546	355
OCT/NOV/DEC	380	689	1,353
JAN/FEB/MAR	305	361	184
APR/MAY/JUNE	278	0	0

GOALS AND ACTUAL NEW CLUBS CUMULATIVE



GOALS AND ACTUAL MEMBERS CUMULATIVE



DROPPED CLUBS: 41	270 CLUBS OF 457 ADDED 1 OR MORE NEW MEMBERS	GENDER DISTRIBUTION	
		MALE 6,143 (58.24%)	FEMALE 4,403 (41.74%)
DROPPED MEMBERS		NON BINARY 0 (0.00%)	PREFER NOT TO ANSWER 2 (0.02%)
DECEASED 26	CLICK HERE FOR CUMULATIVE MEMBERSHIP DATA	TOTAL FAMILY UNIT MEMBERS 852	
CLUB CANCELLED 641		FAMILY MEMBERS PAYING HALF DUES 482	
OTHER 1,225			
TOTAL 1,892			